

EARLY SCHOOL LEAVING IN POLAND



Erasmus+



European Commission

How many ?



Who are they ?

Early school leavers are young people who leave education and training with only lower secondary education, or less, and who are no longer in education and training

EARLY SCHOOL LEAVERS

What causes early school leaving ?

Early school leaving has multiple and often intertwined causes. It results from a combination of personal, social, economic, educational and family-related factors



What are the consequences of early school leaving ?



A WHOLE SCHOOL APPROACH TO REDUCE EARLY SCHOOL LEAVING

The background features a dark blue gradient with faint, light-colored technical diagrams. On the left side, there is a large circular scale with numerical markings from 140 to 260 in increments of 10. Several circular diagrams with arrows and partial arcs are scattered across the background, suggesting a technical or scientific theme.

THE MOST COMMON CAUSES OF EARLY SCHOOL LEAVING

DIFFICULT ECONIMICAL SITUATION



EARLY PREGNANCY



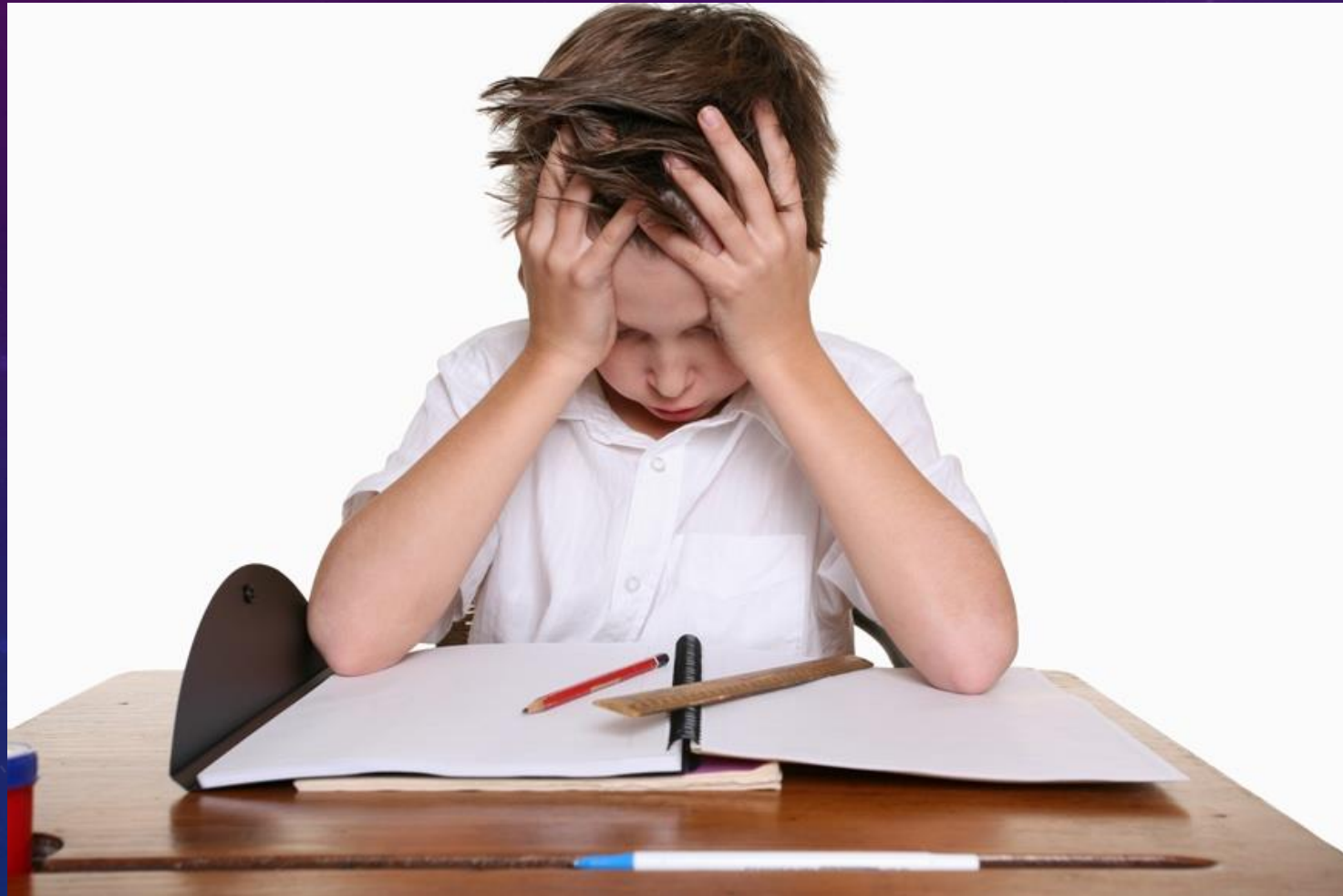
HEALTH PROBLEMS



DISABILITY



SCHOOL PROBLEMS, SCHOOL FAILURES, INSUFFICIENT SKILLS, LACK OF SUFFICIENT KNOWLEDGE

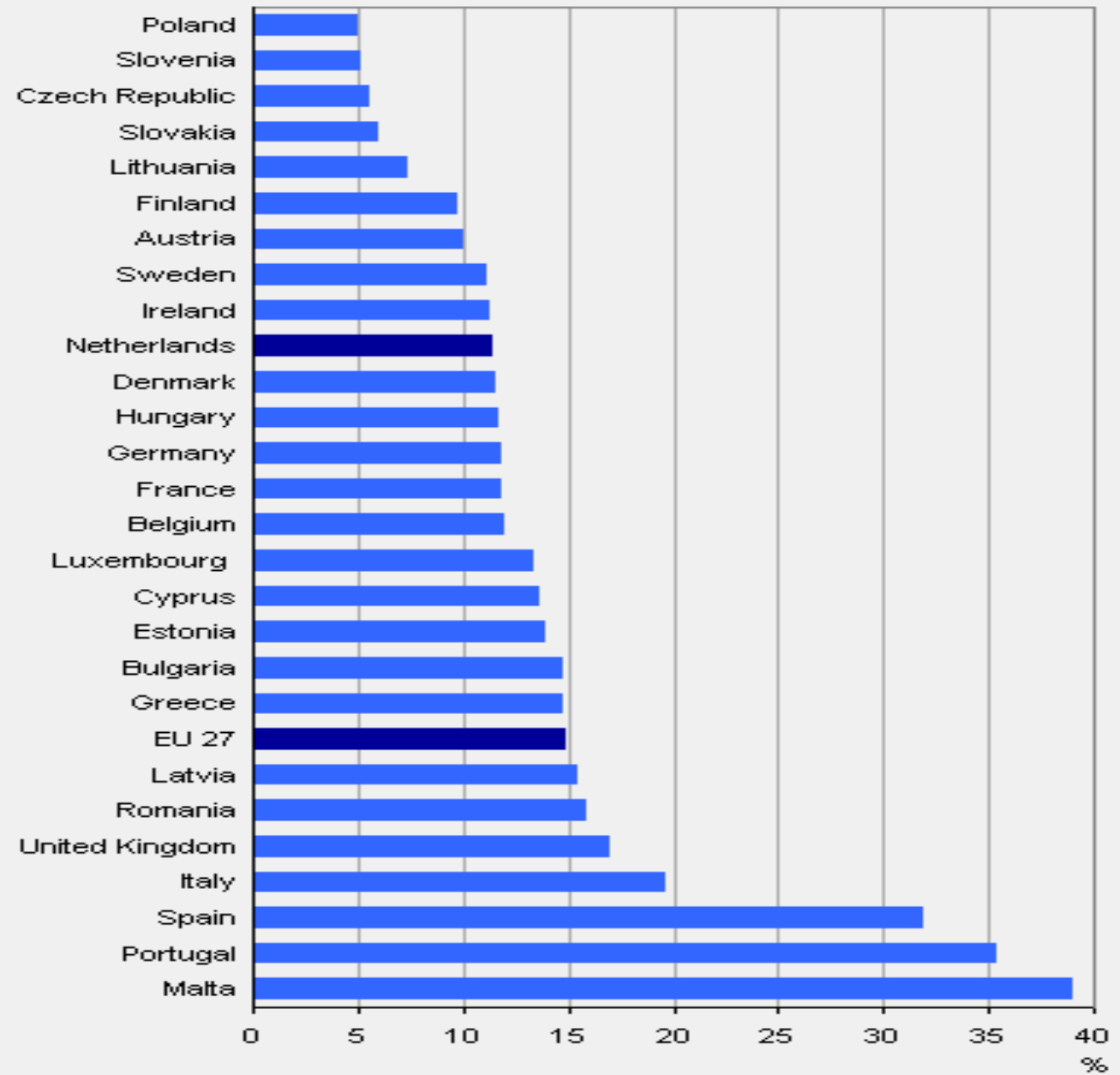


PARENTAL NEGLIGENCE



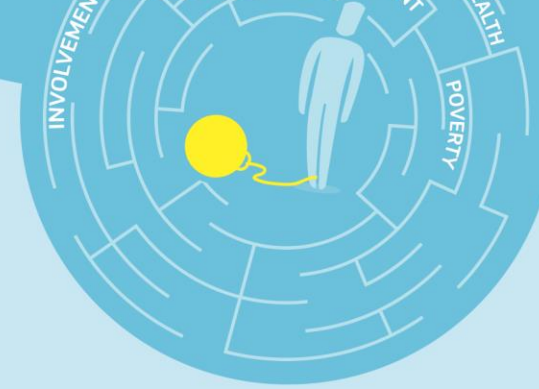
BAD INFLUENCE OF YOUTH GROUPS (SUBCULTURES, FRIENDS, BAD COMPANY)



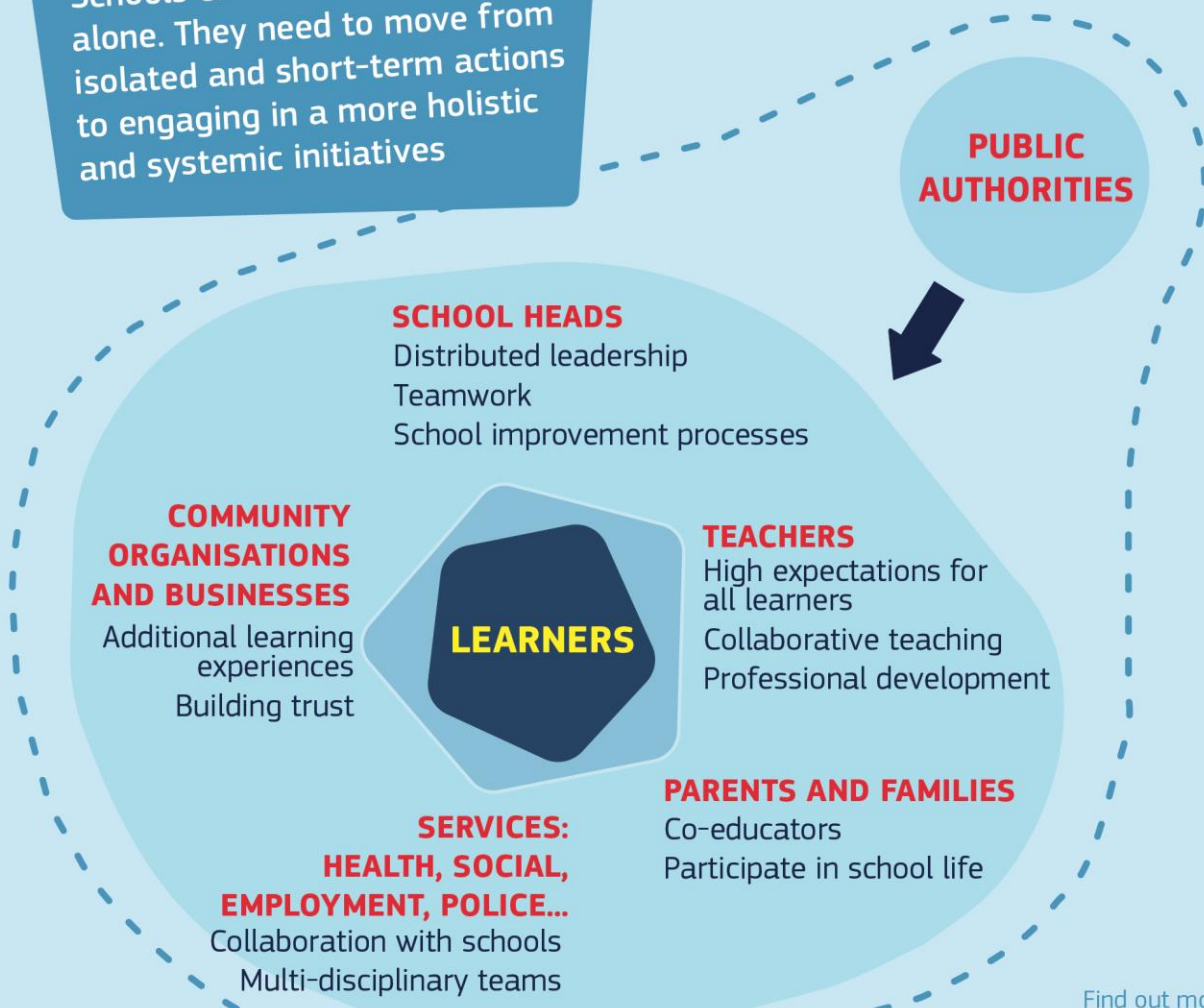


Source: Eurostat

A WHOLE SCHOOL APPROACH TO REDUCE EARLY SCHOOL LEAVING



Schools cannot effectively work alone. They need to move from isolated and short-term actions to engaging in a more holistic and systemic initiatives



The EU

- Monitors Member States' progress in reducing early school leaving
- Promotes cooperation and mutual learning
- Offers guidance and tools for schools
- Funds research to identify successful policies and practices
- Provides co-funding for national measures through the European Social Fund and the Erasmus+ programme